

Quick Reference Guide

Getting Started

New Patient

1. **[Patient]** to enter basic patient information
2. **[Probe]** to select the transducer and exam mode

Scanning

Image Adjustment

1. Choose the corresponding image menu in the operating panel

B Mode

1. **[B]** to enter B mode
2. **[iTouch]** to adjust the gain

CDFI / Power Mode

1. **[Color]** to enter Color mode
2. Tap corner (green dot) of the ROI and drag to change the size
3. Tap inside the ROI box and drag to change the position

PW / CW Mode

1. **[PW]** to enter PW mode
2. Drag PW angle line to change the angle
3. Pinch on image area to adjust SV size
4. **[PW]** again or **[Update]** to obtain the spectrum

LVO (Optional)

1. Select **[Probe]** P4-2s and LVO mode
2. Inject contrast agent and start timer
3. Observe image
4. Store image via **[Retrospective]** and **[Prospective]** on the menu

Measurement

1. **[Measure]** to enter measurement status and open the measurement menu
2. Select measurement tool and measure the target area

Post Scanning

Annotations

1. **[Annotate]** to enter annotation menu
2. Tap to choose position and add annotations

Body Marks

1. **[Annotate]** ⇒ **[Body Markers]** to select desired body mark
2. Tap solid line to move the position of the probe marker
3. Tap dotted line to move the orientation of the probe marker

Save Images / Cine

1. **[Save Image]** to save a single-frame image
2. After freezing image, **[Save Clip]** to save dynamic image
3. **[Review]** to view current patient image(s)

Report and Print

1. **[Report]**
2. Tap in the comment text box and type text
3. **[Image]** on report page to add images
4. **[Done]**
5. **[Preview]** to preview the report before printing or export
6. **[Print]** to print the report

End Exam

1. **[End]** to end current exam. Start a new exam by selecting a different probe or entering new patient information.

Image Management

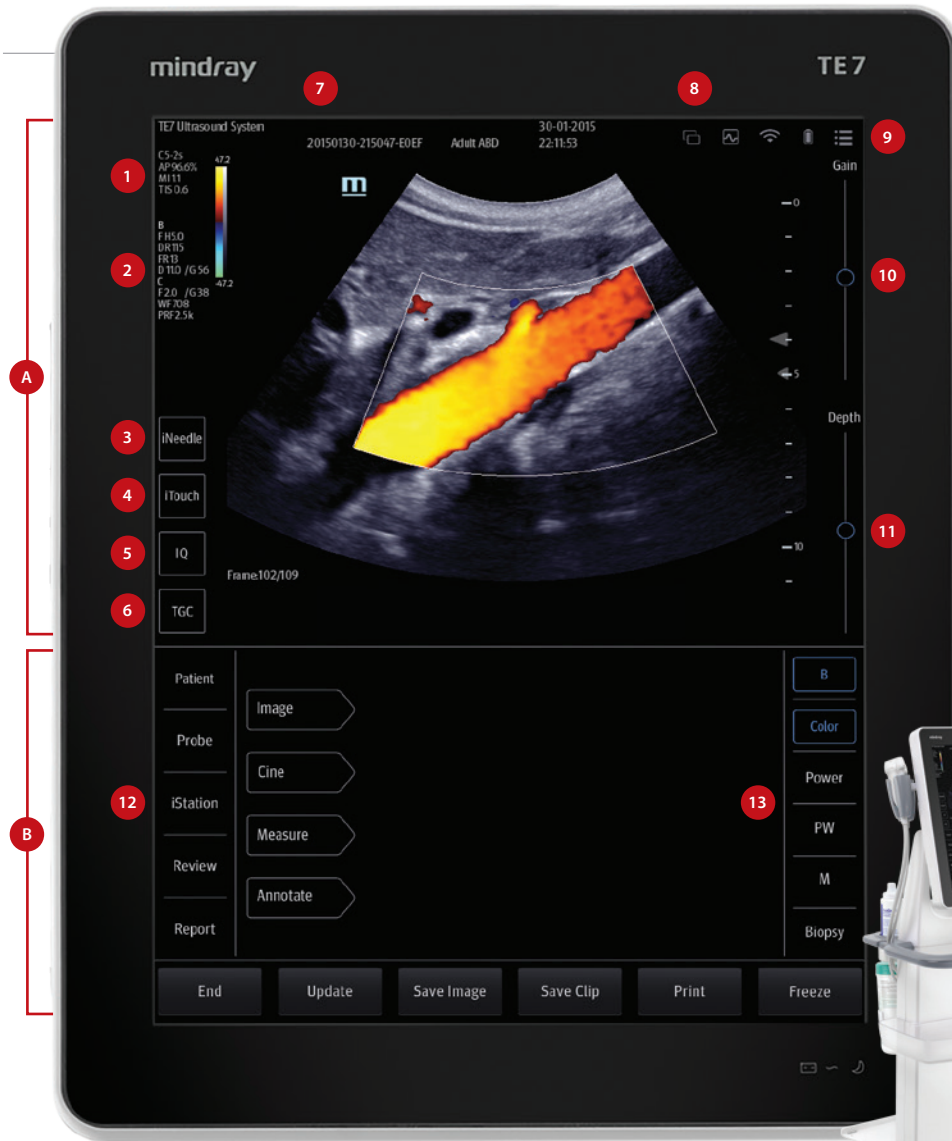
Send Exam

1. **[iStation]** to enter the patient image management system
2. Select an exam from the patient information list
3. **[Send To]** to send the patient information file to USB device, DICOM or another destination

Send Image

1. **[Review]** to enter image preview page
2. Select one image
3. **[Send To]** to send single image to USB device, DICOM or another destination

Note: For detailed information, please refer to the Operator's Manual



- A** Image panel
 - 1 Transducer model, Acoustic indices
 - 2 Parameter area
 - 3 iNeedle enhanced visualization
 - 4 iTouch image optimization
 - 5 Frequency control
 - 6 TGC control
 - 7 Patient information
 - 8 Status icons
 - 9 Tool bar
 - 10 Gain control
 - 11 Depth control

- B** Operating panel
 - 12 iStation workstation for patient exam management
 - 13 Imaging modes

TE7

Quick Reference Guide