

# BeneVision TM80

DISPLAY TELEMETRY TRANSMITTER

## Features and Benefits

- 3.5" color touchscreen LCD
- Gesture-driven for fast, intuitive operation
- Enables continuous monitoring with bidirectional local alarms
- Supports a complete patient record with comprehensive backfill capability to BeneVision DMS telemetry
- 8.1 oz (229 g) with rechargeable lithium-ion battery
- Waterproof rated IPX7
- Rugged, validated to 1.5 m hard surface drop test
- Durable, chemical-resistant materials, compatible with a broad range of commonly used disinfectants
- Clear, easy to read HR, respiration, and SpO<sub>2</sub> numerics
- ECG, respiration, and SpO<sub>2</sub> waveforms at the patient
- Multi-vector arrhythmia analysis with atrial fibrillation detection, continuous ST analysis, and continuous QT/QTc monitoring at BeneVision DMS
- Supports 3/5/6-lead ECG lead sets, both reusable and single patient use, for infection control
- Offers Masimo® or Nellcor SpO<sub>2</sub>
- Non-invasive blood pressure provided by patient-worn BP10 (optional); measurements sent to BeneVision DMS via wireless pairing with TM80
- Operates in 802.11 a/n/ac at 5 GHz
- Flexible power choices include 3 AA or rechargeable lithium-ion battery packs
- Run time up to 36 hours



## Ambulatory monitoring to support your workflow

The **BeneVision TM80 Display Telemetry Transmitter** offers advanced technology for early detection of an ambulatory patient's changing condition. Designed to improve outcomes and facilitate patient transport the TM80 wearable patient monitor allows the clinician to easily convert from Telemetry mode (all alarms monitored at the BeneVision DMS) to Monitor mode (local alarms and display active at the TM80).

The TM80 provides on-board arrhythmia detection, physiological alarms, the ability to record 200 events and 48 hours of tabular trend data right at the patient's side. The TM80 stores two hours of full disclosure waveform data for backfill to the BeneVision DMS in the event of a loss of communication, ensuring a complete patient record. Empowered with this advanced functionality, TM80 enhances workflow as the clinician can quickly respond to the patient's condition, while at their side.

Rugged and reliable, TM80 meets the 1.5 meter drop test and is IPX7 waterproof rated. Power options include a rechargeable lithium ion battery pack that provides impressive runtime on a single charge, serving clinicians well in high occupancy care areas. Additionally, device location capabilities can locate ambulating patients should they travel outside the network range and backfill functionality helps to maintain a seamless patient data record.

TM80 also leverages standard Wi-Fi technologies to provide an expanded number of devices within large coverage areas.

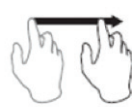
**mindray**

# BeneVision TM80 DISPLAY TELEMETRY TRANSMITTER

## Easy operation with intuitive gestures



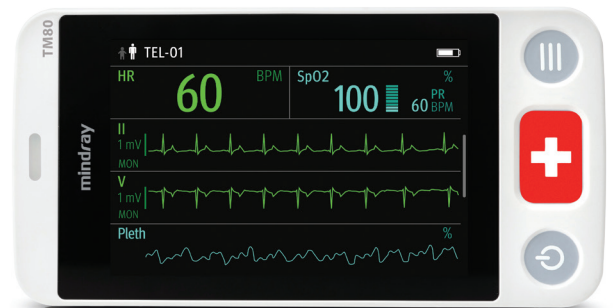
**Tap** – to select a function or select a parameter to configure



**Drag** – from the top to toggle between landscape and portrait modes  
– from the bottom to access configured Quick Keys



**Flick** – to scroll through waveforms, numerics, and menus

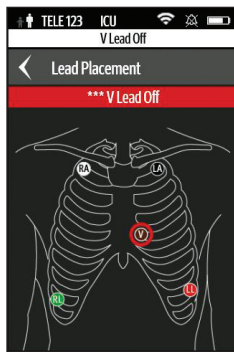


View additional QRS complexes using landscape mode

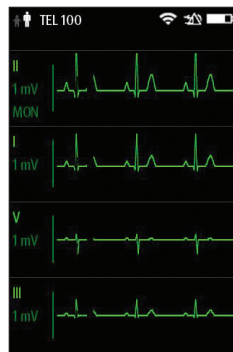
## Fast access to clinical information



Main Screen is configurable based upon preference  
Quick Keys provide access to common functions



Lead Placement tool aids troubleshooting, indicating missing or loose electrodes



Up to seven ECG waveforms can be viewed with a flick of the display

## Optional NIBP Module



BeneVision BP10 provides non-invasive blood pressure measurement. BP10 wirelessly pairs to TM80, sending data through to BeneVision DMS and the EMR.

Mindray North America  
800 MacArthur Blvd., Mahwah, NJ 07430  
Tel: 800.288.2121 Tel: 201.995.8000 Fax: 800.926.4275 [www.mindray.com](http://www.mindray.com)

©2019 Mindray DS USA, Inc.  
Mindray® is a registered trademark of Shenzhen Mindray Bio-Medical Electronics Co., Ltd. All rights reserved.  
All brands and product names are trademarks of their respective owners. 06/19 P/N: 0002-08-37046 Rev C

**mindray**  
NORTH AMERICA